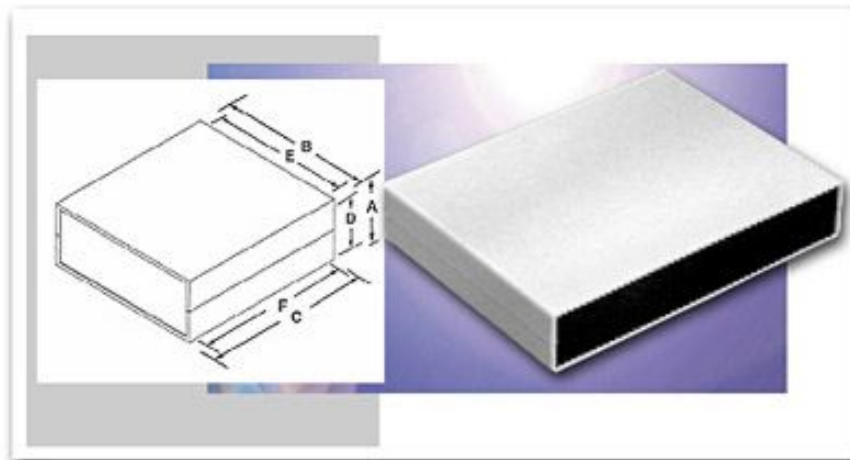


Plastic Boxes  
**Plasticase**  
**Style D**



[Click on Image for Larger View](#)

**(STYLE CHANGE)** These sturdy enclosures come in a variety of styles and sizes and are constructed of high quality plastic materials. Housing designs allow complete accessibility to internal components. Contact BUD factory for optional colors, materials, EMI/RFI shielding and custom modifications.

**Design Features**

Style D Molded in card guides and mounting bosses Available in four versions.

**#1** - Dark gray ABS covers with light gray ABS end panels. UL94V-0 flammability rating, suggested service temperature -40C to 80C

**#2** - Dark gray ABS covers with natural finish aluminum end panels. UL94V-0 flammability rating suggested service temperature -40C to 80C

**#3** - Light gray ABS covers with black ABS end panels. UL94-HB flammability rating, suggested service temperature -40C to 80C

**#4** - Light gray ABS covers with natural finish aluminium end panels. UL94-HB flammability rating, suggested service temperature -40C to 80C



| Style D   |   |       |        |       |       |        |       |                     |               |
|-----------|---|-------|--------|-------|-------|--------|-------|---------------------|---------------|
| Version 1 | Drawings                                | A     | B      | C     | D     | E      | F     | Size                | Weight (Ozs.) |
| PC-11480  | <a href="#">PDF</a> <a href="#">DXF</a> | 1.38" | 5.51"  | 4.33" | 1.18" | 5.32"  | 4.07" | 1.20"x 5.31"x .07"  | 4.6           |
| PC-11481  | <a href="#">PDF</a> <a href="#">DXF</a> | 1.57" | 8.86"  | 6.50" | 1.35" | 8.62"  | 6.24" | 1.37"x 8.62"x .07"  | 12.3          |
| PC-11482  | <a href="#">PDF</a> <a href="#">DXF</a> | 2.56" | 10.24" | 7.09" | 2.32" | 10.00" | 6.78" | 2.36"x 10.00"x .07" | 17.8          |

Style D

| Version 2  | Drawings                                | A     | B      | C     | D     | E      | F     | Size                | Weight (Ozs.) |
|------------|---|-------|--------|-------|-------|--------|-------|---------------------|---------------|
| PC-11480-A | <a href="#">PDF</a> <a href="#">DXF</a> | 1.38" | 5.51"  | 4.33" | 1.18" | 5.32"  | 4.07" | 1.20"x 5.31"x .07"  | 4.6           |
| PC-11481-A | <a href="#">PDF</a> <a href="#">DXF</a> | 1.57" | 8.86"  | 6.50" | 1.35" | 8.62"  | 6.24" | 1.37"x 8.62"x .07"  | 12.3          |
| PC-11482-A | <a href="#">PDF</a> <a href="#">DXF</a> | 2.56" | 10.24" | 7.09" | 2.32" | 10.00" | 6.78" | 2.36"x 10.00"x .07" | 17.8          |

| Style D     |   |       |        |       |       |        |       |                     |               |
|-------------|---|-------|--------|-------|-------|--------|-------|---------------------|---------------|
| Version 3   | Drawings                                | A     | B      | C     | D     | E      | F     | Size                | Weight (Ozs.) |
| PC-11480-LG | <a href="#">PDF</a> <a href="#">DXF</a> | 1.38" | 5.51"  | 4.33" | 1.18" | 5.32"  | 4.07" | 1.20"x 5.31"x .07"  | 4.6           |
| PC-11481-LG | <a href="#">PDF</a> <a href="#">DXF</a> | 1.57" | 8.86"  | 6.50" | 1.35" | 8.62"  | 6.24" | 1.37"x 8.62"x .07"  | 12.3          |
| PC-11482-LG | <a href="#">PDF</a> <a href="#">DXF</a> | 2.56" | 10.24" | 7.09" | 2.32" | 10.00" | 6.78" | 2.36"x 10.00"x .07" | 17.8          |

| Style D      |   |       |        |       |       |        |       |                     |               |
|--------------|---|-------|--------|-------|-------|--------|-------|---------------------|---------------|
| Version 4    | Drawings                                | A     | B      | C     | D     | E      | F     | Size                | Weight (Ozs.) |
| PC-11480-LGA | <a href="#">PDF</a> <a href="#">DXF</a> | 1.38" | 5.51"  | 4.33" | 1.18" | 5.32"  | 4.07" | 1.20"x 5.31"x .07"  | 4.6           |
| PC-11481-LGA | <a href="#">PDF</a> <a href="#">DXF</a> | 1.57" | 8.86"  | 6.50" | 1.35" | 8.62"  | 6.24" | 1.37"x 8.62"x .07"  | 12.3          |
| PC-11482-LGA | <a href="#">PDF</a> <a href="#">DXF</a> | 2.56" | 10.24" | 7.09" | 2.32" | 10.00" | 6.78" | 2.36"x 10.00"x .07" | 17.8          |

[DXF](#) Autocad DXF Specifications File  
(Requires CAD software such as AutoCAD)

[PDF](#) Adobe PDF Specifications File



[Download PDF Viewer](#)

[Home](#) | [Company Info](#) | [Online Catalog](#) | [Check Stock](#) | [Distributor/Price](#)

[Reps](#) | [New](#) | [Search](#) | [Contact](#) | [Privacy Policy](#)

## BUD INDUSTRIES INC.

P.O. Box 998

Willoughby, Ohio 44094

Phone: 440-946-3200 Fax: 440-951-4015

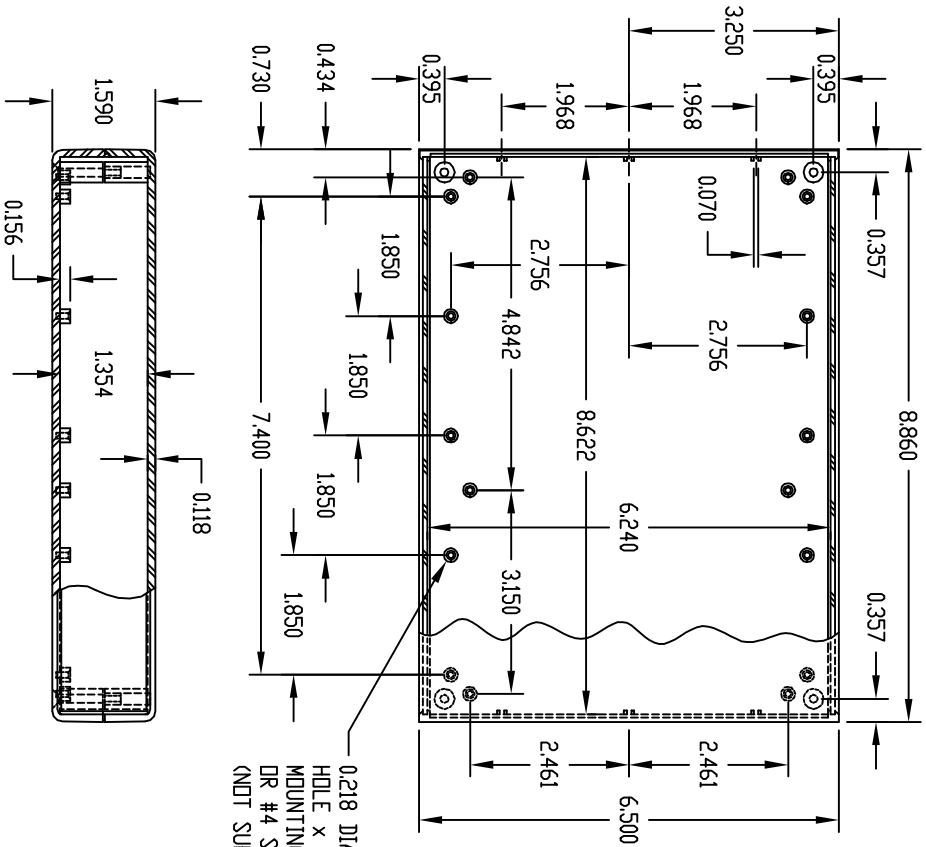
E-Mail: [saleseast@budind.com](mailto:saleseast@budind.com)

PART NAME

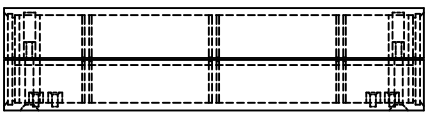
PLASTICASE (STYLE E)

PART No.

PC-11481 & PC-11481-A & PC-11481-LG & PC-11481-LGA



0.218 DIA. BRSS WITH 0.090 DIA. HOLE x 0.218 DEEP - (16) PLACES MOUNTING BASSES USE EITHER M2.5 METRIC OR #4 STD. SHEET METAL SCREWS x 0.188' LG. (NOT SUPPLIED)



**MATERIAL & FINISH:**

- (NO SUFFIX) UL94V-0 FLAME RETARDANT ABS DARK GRAY PLASTIC COVERS WITH LIGHT GRAY PLASTIC PANELS.
- (SUFFIX -A) UL94V-0 FLAME RETARDANT ABS DARK GRAY PLASTIC COVERS WITH NATURAL FINISH ALUMINUM PANELS.
- (SUFFIX -LG) HIGH-IMPACT ABS LIGHT GRAY PLASTIC COVERS WITH BLACK PLASTIC PANELS.
- (SUFFIX -LGA) HIGH-IMPACT ABS LIGHT GRAY PLASTIC COVERS WITH NATURAL FINISH ALUMINUM PANELS.

FOUR (4) M3 x 0.984' LG. SCREWS SUPPLIED FOR ASSEMBLY.

FOUR (4) RUBBER SELF-ADHESIVE FEET SUPPLIED.

**NOTE:** ALL DIMENSIONS HAVE ±0.015 TOLERANCE UNLESS OTHERWISE SPECIFIED.

